

IPv6 Ready Logo Phase I

測試驗證活動及申請程序介紹



for Phase I



for Phase II

NICI IPv6 標準測試分

April 1, 2008



報告內容

- 國內外IPv6最新發展簡介
- 國內外IPv6測試服務概況
- **IPv6 Ready Logo Program**
 - Introduction
 - Activities and Status
- 測試作業與申請程序



國內外IPv6發展

IPv6 getting hotter in 2003 and 2004

2/12/21 台日第一屆IPv6合作會議，標準分組爭本支持台灣加入IPv6 Ready Logo Committee
2/10/24 HiNet申請到我國第一組IPv6 IX商用位(2001:07FA:0001::/48)並開始提供IPv6 IX服務
2/4/11 “IPv6 Forum Taiwan”成立；結合8家業署成立“IPv6產業研發聯盟協議”

• 2002/4月NTT, 7月 IJ 開始提供IPv6收費服務

2002

• 2001年10月 APEC上海會議，日本與中國宣佈IPv6發展合作協議
• 2001年4月日本IPv6 Promotion Council成立

2001

• 2000年9月日本首相森喜郎宣布2005日本網路全面IPv6化；
• 2000年9月IJ, NTT開始提供IPv6商業試用服務

2000

1999/7/1 IPv6商用位址開放申請
1999/4月 國際IPv6 Forum成立

1999

IETF IPv6 RFC標準建議書正式通過

1998

1997

1996年3月6Bone成立 (全球IPv6實驗骨幹)

1996

1995

IETF選定IPv6建議

1994

1993

IETF IPng Working Group founded

1990~3

6 Next Generation Internet Protocol proposed

01/12/28 NICI IPv6推動工作小組成立
01/7/1 HiNet開始提供IPv6商業試用服務(全球日本以外第一家提供服務之ISP)

2000/2/8 HiNet申請到我國第一組(亞太區第八)商用IPv6位址(2001:0238::/32)

1.6.1升級成為6Bone台灣唯一IPv6骨幹匯接點(bone site)，與全球16個國際IPv6骨幹點連供32個國內外研發單位IPv6轉接服務

中華電信研究所成立IPv6研發團隊加入6Bone
HTTL參加電信國家型計畫，建立IPv6研究環境

NII



IPv6最新發展

4/1/14 居易科技 Vigor3300 通過認證

2/2 資策會 III TCP/IP Protocol Stack 通過認證

1/5 英特爾 Intel IXDP425 通過認證

1/15 明泰科技 Alpha Home GW 通過認證

1/21 CHTTL IPv6服務閘道器(6SG)通過認證

1/22~26 參加ETSI Plugtest

1/12 NICI IPv6標準測試實驗室啓用儀式與服務
說明會

1/1 NICI IPv6標準測試實驗室開始提供服務

1/1 Net提供IPv6多媒體影音服務(IPv6 HiChannel)

1/1 參加第一屆ETSI國際IPv6遠端測試活動

1/27 日本參訪CHTTL, CCL
1/25 第二屆台日IPv6合作會議

2004/01

2003/12

2003/11

2003/10

2003/09

2003/08

2003/07

2003/06

2003/05

2003/04

2003/03

2003/02

2003/01

• '04/2/1 北美Moonv6 Phase II 測試活動

• '04/1/20 發佈美國主要廠商通過IPv6認證新聞

• NTT繼亞、歐、澳後開始在美國提供IPv6服務

• 12/8 IPv6 Ready Logo Phase II規範會議

• 11/27 中國發布CNGI IPv6發展計畫

• 11/21 IPv6 Ready Logo Committee公佈全球
批15件通過認證之產品

• 10/1 北美Moonv6 Phase I 測試活動

• 9/1 IPv6 Ready Logo Phase I 開始接受申請

• 6/19 美國國防部宣布2003年10月以後之國防採
合約的網路相關設備須支援IPv6，2008年之後
路將全面支援IPv6.

• 4/28 IPv6 Ready Logo Program成立

• 5/12~14第一屆ETSI國際IPv6遠端測試活動

• 2/24~26 第一屆亞太區全球IPv6國際高峰論壇
台舉辦





美國IPv6新看法

美國國防部於**2003年6月9日**發表了一份“**IPv6備忘錄**”，提出了在美國軍方正規劃實施的“**全球資訊格網**”(Global Information Grid)中全面部署**IPv6**的重要決策，並作出了**300億美元**以上的IT預算。

美國國防部看中**IPv6**最主要的三個原因是**IPv6**能提供更高的安全性、改善的服務品質(QoS)和更有效的IP位址管理。

美國國防部已具體提出了**IPv6**的進度規劃：

- **2002年至2004年**：IPv6標準化並進行大規模試驗(Moonv6 program)；
- **2005年至2007年**：IPv6和IPv4並行；
- **2008年**：實現網路全面IPv6化。



美國商業部於**2003年10月14日**成立**IPv6**工作小組，以協助布希政府確保美國在網際網路上的利益。



中國大陸IPv6最新發展

- 2003/11/27 中國工程院鄔賀銓副院長首次正式披露了中國下一代互聯網示範工程(CNGI)的有關情況。中國將在2005年底建設成世界上最大的IPv6網路。
 - CNGI將由國家發改委劃撥的4億元資金和各大運營商配套的10億元資金，用以建設IPv6的示範網。
 - 參加投標的有中國電信、中國網通、中國移動、中國聯通、中國鐵通以及CERNET等六家運營商。將構築6個全國性的IPv6骨幹網絡（覆蓋全國39個重要節點）和至少2個交換中心（IX）以實現各IPv6骨幹網路的互連互通。
 - 中國聯通表示，將於2004年7月前在北京、上海、廣州、瀋陽、成都、西安、武漢等七個城市建設完成IPv6的骨幹網，7月份左右開始試運並提供部分商業應用。2004年底期望可達15個城市。
 - 積極介入之外商：NEC, Hitachi, Fujitsu, Juniper。

CNGI

產業資訊：

- “華為”路由器產品在2003年10月通過了北京傳輸所組織的IPv6協議入網測試。華為的規劃是從2004年開始，所有的數據通信、NGN及無線產品逐步全線支持IPv6。
- “中興”也在努力開發同時支持IPv4和IPv6協議的核心路由器產品。基於在行動上所取得的業績，“中興”在softswitch、CDMA和W-CDMA核心網絡產品的設計之初，就嚴格要求必須支持IPv6。

● 2003/12/30 日本、中國大陸、南韓宣布合作發展IPv6，希望2005年完成IPv6聯網並開始IPv6應用服務。

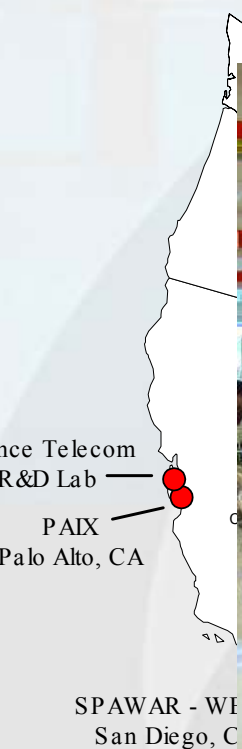


國內外IPv6測試服務概況

- 日本 (Event-Based / per year [每年1~2月左右舉辦])
 - TAHI
 - Yokogawa Corp.
- 北美 (Long Term Project)
 - UNH Moonv6 (年費制)
- 歐洲 (Event-Based / per year [每年9月左右舉辦])
 - ETSI IPv6 Plugtests
- 韓國
 - TTA (Lab Based)
 - ION (Event-Based)
- 台灣
 - NICI IPv6 標準測試分組 (目前免費, Lab-Based), 隨時提供 IPv6 測試服務及技術支援

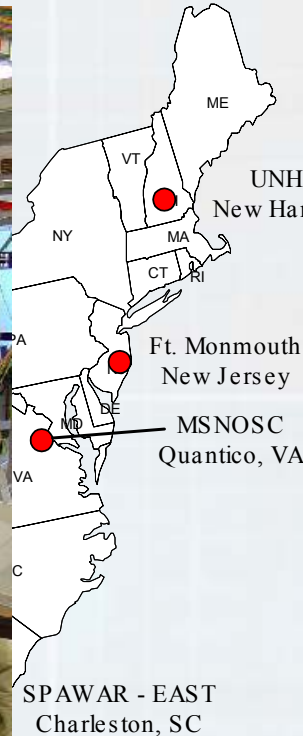


Moonv6 participation sites



Vendor Participant List

- Cisco
- Juniper
- Foundry Network
- Extreme Networks
- Nokia IP 380
- CheckPoint Firewall-1(Sun Ultra 5)
- NEC
- Hitachi
- Fujitsu
- Procket Networks
- 6Wind
- HEXAGO
- Ixia
- Spirent
- Agilent





IPv6 Ready Logo Committee



Announcement: Apr. 28, 2003

Chairperson: Prof. Hiroshi Esaki (WIDE/IPv6 PC, Japan)

Objectives:

- **Phase 1: Minimum Requirement Testing (2003/9/1 launched)**
- **Phase 2: Complete Requirement Testing**

face-to-face meeting

- (1) on July 21 (Mon) at Sophia (near Nice) hosted by ETSI,**
- (2) September 23 (Tue) in Brussels ETSI an International Workshop on IPv6 Testing, Certification and Market Acceptance**
- (3) Dec. 8, 2003 in IPv6 Summit in America for Phase II test spec discussion**
- (4) Jan. 8, ~ Jan. 10, 2004 in UNH-IOL: "Technical meeting on core specification"**
- (5)**

Members: ETSI, JP TAHI, UNH, TW NICI IPv6 SC, KR TTA, CN BII, etc.



Consists in Two Phases

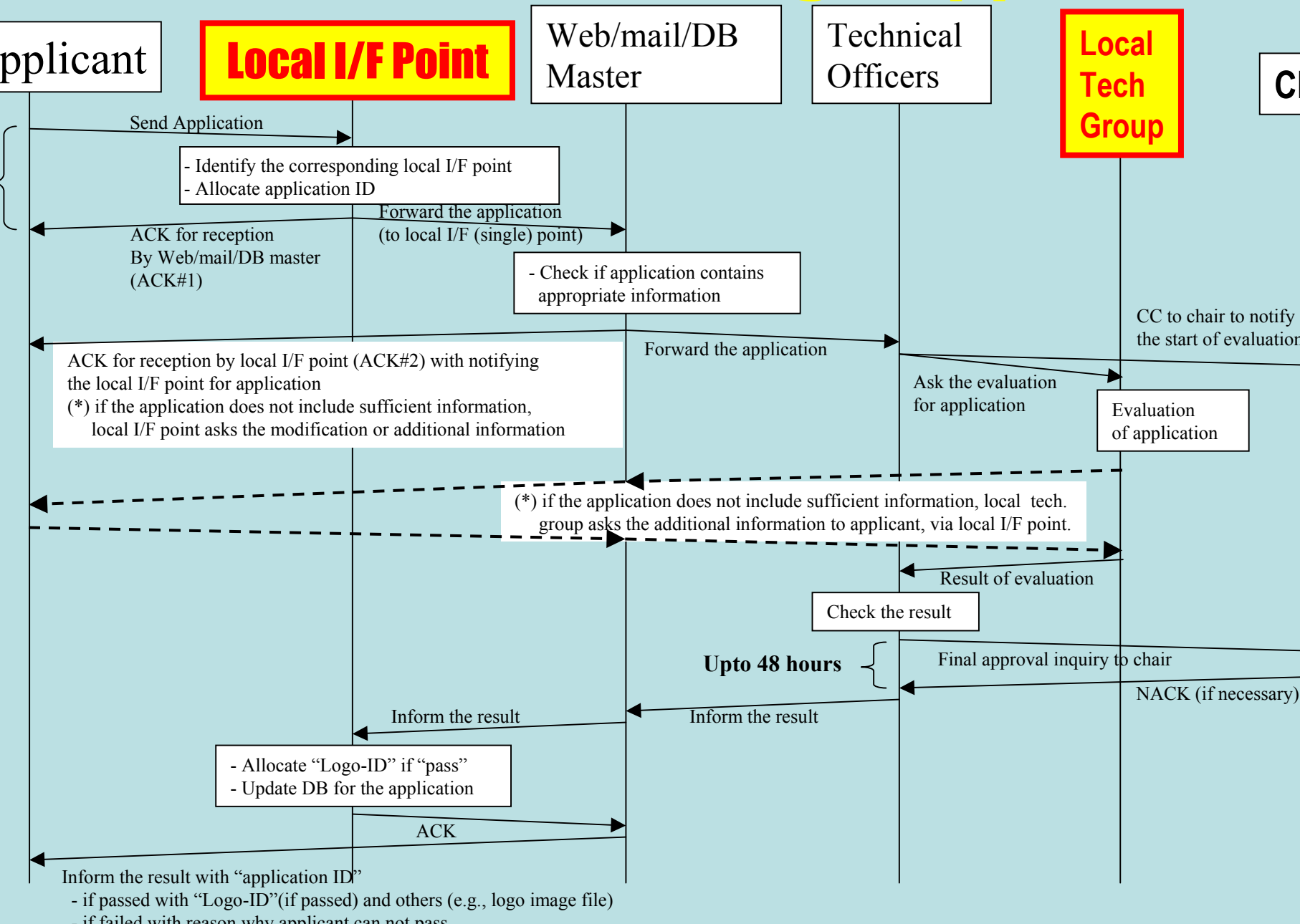
Phase I (Short term period) : (2003/9/1 launched)

In the first stage, the Logo will indicate that the product includes IPv6 mandatory core protocols and can interoperate with other IPv6 equipments.

Phase II and III (Long term period) :

The "IPv6 ready" step implies a proper care, technical consensus and clear technical references. The IPv6 ready logo will indicates that a product has successfully satisfied strong requirements stated by the v6LC.

Process Flow for Logo Application





Local Interfaces of Asia

COUNTRY	Local I/F	Local_Technical_Group
TAIWAN	v6STD NICI IPv6標準測試分組	v6STD Lab. NICI IPv6標準測試實驗室
KOREA	TTA	TTA
JAPAN	v6PC	v6PC
CHINA	BII	BII
Others	v6PC	v6PC



Phase 1

- **Objectives**

- Encourage every organizations, who will deploy IPv6.
- Indicate to ordinary people the information of interoperability and conformance for equipments and services.

- **Target**

- Router BOX
- Host BOX
- Operation System
- Protocol Stack
- **Special Equipment (non-host/router)**



How to Get?

There are two ways in Phase-1

- Self-Test Base. (Follow Test Specification)
- Interoperability Test Event Base. (**is not Mandatory**)

Test Specification (Dec. 1, 2003 updated)

- For HOST/ROUTER (Ver. 1.2.1)
 - IPv6 Specification [Router, Host], RFC 2460
 - ICMPv6 for IPv6 Specification [Router, Host], RFC 2463
 - Neighbor Discovery [Router, Host], RFC 2461
 - IPv6 Stateless Address Autoconfiguration [Router, Host] RFC 2462
- Interoperability test scenario (Ver. 1.2.4)
 - For HOST/ROUTER
 - Interoperability Test Scenario



Self-Test Base Procedures

- Obtain the test specification. (<http://www.ipv6ready.org>)
- Get test result log with the self-testing tool.
(<http://www.ipv6ready.org>)
- Fill the application form for self-test.
- Send the application form and test test evidence(*2) to v6-appli@ipv6ready.org by e-mail.
- Examine by the technical officers. If the applicant does not get a response within 1 month, please inform to ipv6ready-info@ipv6ready.org
- Allocate the serial number
- Put applicant's information on this Website.



Criteria

Self-test base application

- 100% pass for Self-test based on the test specification
- 4 interoperable devices(*2) from other vendors including 2 hosts and 2 routers.

Interoperability test event base application

- 100% pass for Self-test based on the test specification
- 4 interoperable devices(*2) from other vendors including 2 hosts and 2 routers.
- The interoperability test report is required.
- The report needs coordinator's endorsement.



Special Equipment v.s. Host/Router

# of Test Items	Host (Ver. 1.2.1) Dec. 1, 2003 updated	Router (Ver. 1.2.1) Dec. 1, 2003 updated	Special Equipment (Ver. 1.2.2b) Feb. 24, 2004 updated
IPv6 Spec. RFC 2460	40	50	40
ICMP RFC 2463	13	14	13
ND RFC 2461	28	31	17
Stateless Address Auto configuration RFC 2462	26	14	14

Snap Shot of Test Log

IPv6 Conformance Test For Stateless Address Configuration - Microsoft Internet Explorer

檔案(F) 編輯(E) 檢視(V) 我的最愛(A) 工具(T) 說明(H)

← 上一頁 - 下一頁 - 刷新 - 搜索 - 我的最愛 - 媒體 - 打印 - 收藏夹 - 任务栏 - 系统托盘 - 帮助

地址(A) [地址] IPv6 推動工作小組標準測試分組WEC 20030820測試結果\src_ipv6ready\et-ipv6ready-p1-router-1\stateless-addressconf\index.html 移至 連結 » Norton AntiVirus

IPv6 Conformance Test For Stateless Address Configuration

Tool Version : REL_2_1_1
Test Program Version : V6LC_P1_1_0

Start : 2003/08/29 12:17:49
End : 2003/08/29 12:35:59

Test Results

TOTAL : 14
PASS : 14
FAIL : 0
WARN : 0
SKIP : 0
N/A : 0

Terminology

NUT: Node Under Test
RS: Router Solicitation
RA: Router Advertisement

No.	Title	Result	Log	Script	Packet	Dump (bin)
	Test for a LLA Address					
	Confirm if NUT generates LLA and performs DAD and assigns the address					
1	NUT performs DAD for its Link-local address	PASS	X	X	X	Link0
	NUT receives NS or NA *AFTER* transmitting DAD NS					
	- DAD would Succeed (VALID packets)					
2	NUT receives VALID DAD NS (Target!=NUT), after transmitting DAD NS	PASS	X	X	X	Link0
3	NUT receives VALID NS (Src==Unicast), after transmitting DAD NS	PASS	X	X	X	Link0
4	NUT receives VALID NS (Src==Unicast, Dst==Unicast), after transmitting DAD NS	PASS	X	X	X	Link0
5	NUT receives VALID DAD NA (Target!=NUT), after transmitting DAD NS	PASS	X	X	X	Link0
	- DAD would Succeed (INVALID packets)					
6	NUT receives INVALID DAD NS (Hoplimit==254), after transmitting DAD NS	PASS	X	X	X	Link0
7	NUT receives INVALID DAD NA (Hoplimit==254), after transmitting DAD NS	PASS	X	X	X	Link0
8	NUT receives INVALID DAD NS (Dst==Allnode), after transmitting DAD NS	PASS	X	X	X	Link0
9	NUT receives INVALID DAD NS (Src==Unspecified, Dst==Tentative), after transmitting DAD NS	PASS	X	X	X	Link0
10	NUT receives INVALID DAD NS (w/ SLL option), after transmitting DAD NS	PASS	X	X	X	Link0



Interoperability Test Scenario

- For Host device
 - Host vs. Host
 - Host vs. Router
 - Node vs. Node

- For Router device
 - Host vs. Router
 - Router vs. Router
 - Node vs. Node



Host vs. Host Topology

Topology:

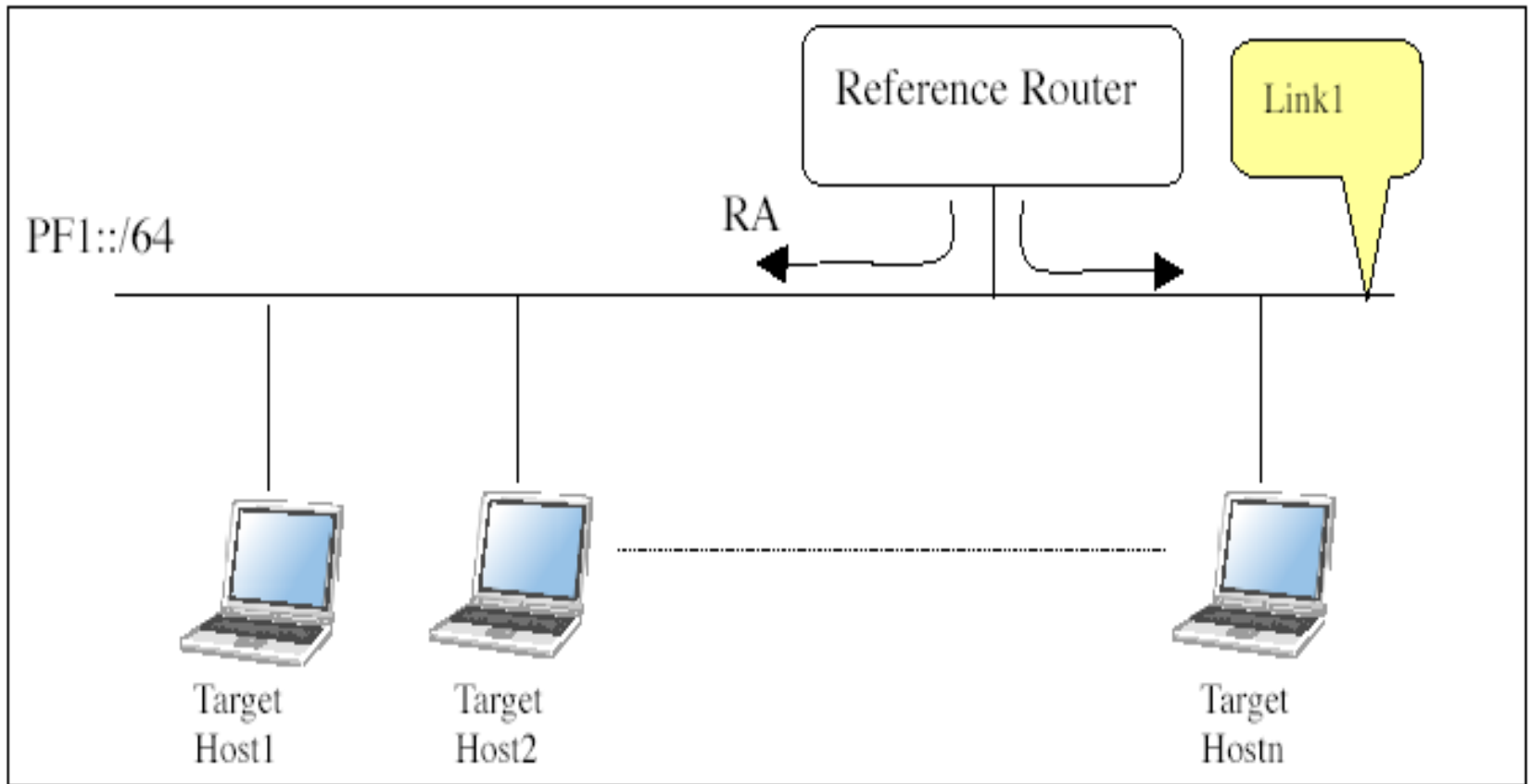


Fig. 1.1 Topology for Host vs. Host



Host vs. Router Topology

Topology:

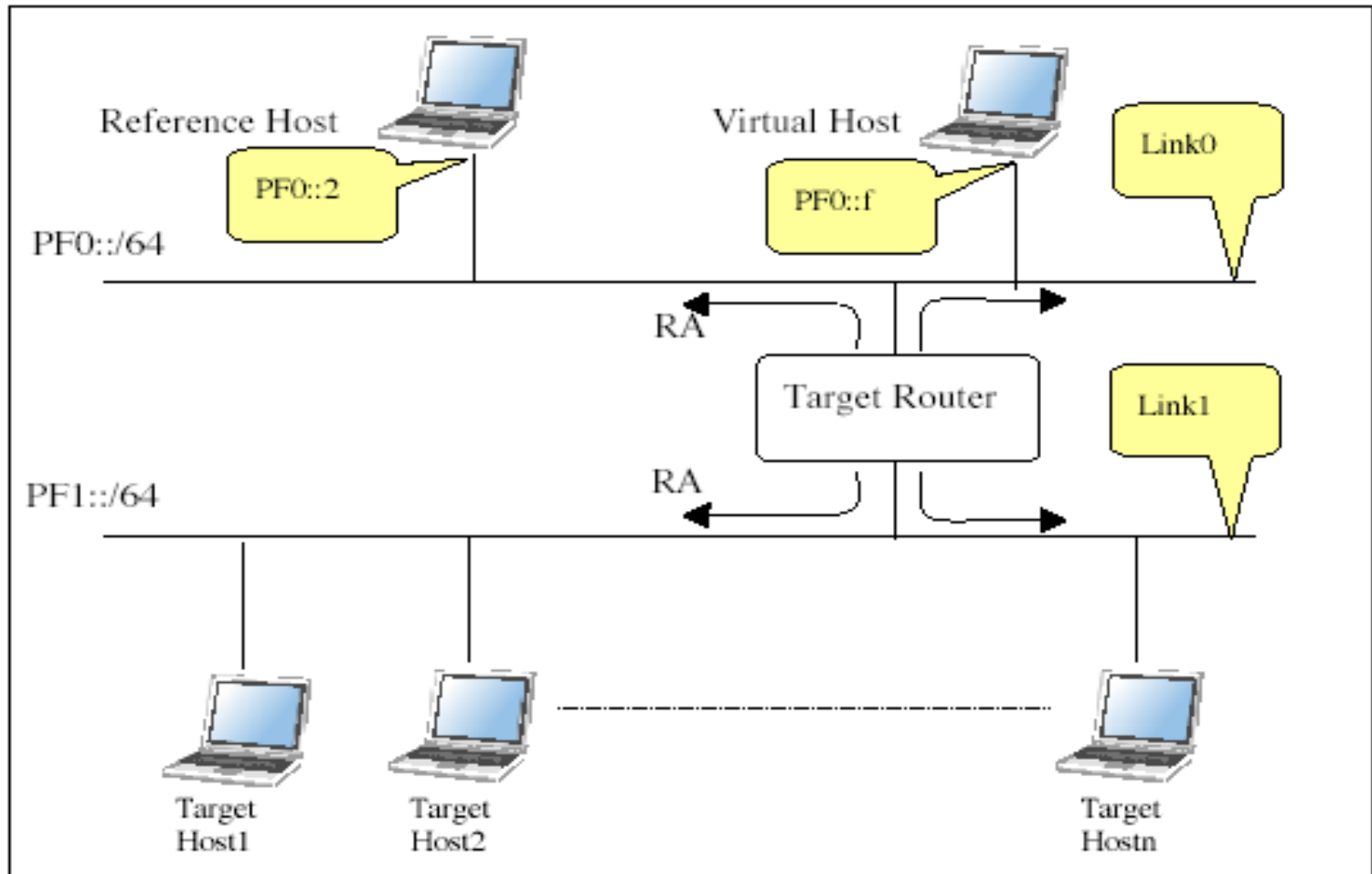


Fig. 2 1. Topology for Host vs. Router

Router vs. Router Topology

Topology:

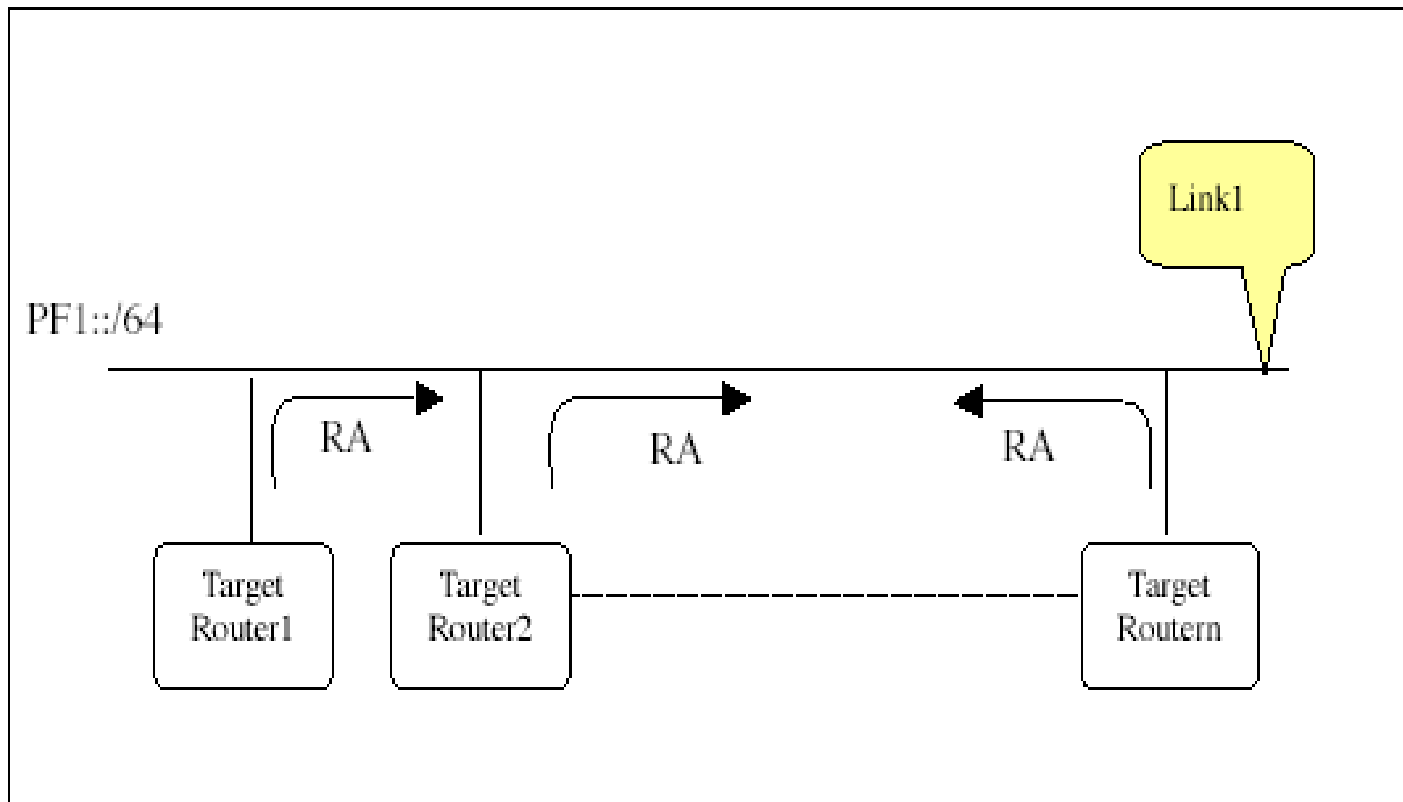


Fig. 3.1. Topology for Router vs. Router



Application Form (Example)

IPv6 Ready Logo Program Phase-1
Application Form (self-test version V1.2.1)
(Interoperability Test 1.2.4)

Target Information:

Vendor Name: A.com
Country Name: Taiwan
Device Name: ipv6-007Router
Device Version: 1.1.1
Device Classification: Router
Device Description: Enterprise Router

Contact Person:

Full Name: Linda
E-mail: linda@a.com.tw

Test Result:

***Self-test Log should be attached with this application form.**
(If Target is OS/Protocol Stack running environment have to be described below.)

Environment for OS/Protocol Stack: N/A

Interoperability test results

(4 interoperable devices from other vendors including 2 hosts and 2 routers.)

Router:

- 1. Vendor name: Cisco / Device name: 7200 Router / Version: ios12.3(5)**
- 2. Vendor name: 6Wind / Device name: 6200 Series / Version: SIXOS6.3.1**


Host:

- 1. Vendor name: IBM / Device name: xSeries 335 / Version: Linux Red-Hat 7.3**
- 2. Vendor name: Advantech / Device name: SG_3103 / Version: FreeBSD 4.6.2 release**



Phase 2 Logo Policy (under public review)

- The test result includes both conformance and interoperability test. The logo committee does not execute the test, but the applicant does execute the test.
- The logo committee will define the test specification, that will includes multiple functional modules for testing. At this time, the logo committee will deliver the following four components;
 - 1) IPv6 Core Protocol Stack
 - 2) IPSec
 - 3) MIPv6
 - 4) Transition technologies
- Each components have test items for each product category.
 - a. Host
 - b. Router
 - c. Tunnel Broker
 - d. IPv6/IPv4 NAT device, etc.,
- The test is the product of {functional_component} and {product_category}.



Phase 2 Logo Policy (under public review)- Continued

- IPsec is mandatory option for IPv6.
However, at this moment of time, when IPsec is mandatory to obtain the Phase 2 logo, it would be a so/too hard hurdle for many products.
- So, v6LC want to propose the following;
We define two steps;
 - 1) Step I : Phase II without mandating IPsec
(*) Of course, there is an IPsec test
 - 2) Step II: Phase II with mandating IPsec
(*) We mandate the IPsec for logo approval
- Step II (Phase III) would be from 2006 (?).



Phase 2 - Coverage

- IPv6 Core
 - Internet Protocol Version 6 (IPv6) Specification (RFC 2460)
 - Neighbor Discovery for IP Version 6 (IPv6) (RFC 2461)
 - IPv6 Stateless Address Autoconfiguration (RFC 2462)
 - Internet Control Message Protocol (ICMPv6) for the Internet Protocol Version 6 (IPv6) Specification (RFC 2463)
 - Path MTU Discovery for IP version 6 (RFC 1981)
- MLDv1
 - Multicast Listener Discovery (MLD) for IPv6 (RFC 2710)
 - IPv6 Router Alert Option (RFC 2711)
- MIPv6
 - draft-ietf-mobileip-ipv6-24.txt
 - draft-ietf-mobileip-mipv6-ha-ipsec-06.txt



Phase 2 - Coverage (Cont.)

- IPsec
 - Security Architecture for the Internet Protocol (RFC 2401)
 - IP Authentication Header (RFC 2402)
 - The Use of HMAC-MD5-96 within ESP and AH (RFC 2403)
 - The Use of HMAC-SHA-1-96 within ESP and AH (RFC 2404)
 - The ESP DES-CBC Cipher Algorithm With Explicit IV (RFC 2405)
 - IP Encapsulating Security Payload (ESP) (RFC 2406)
 - The NULL Encryption Algorithm and Its Use With IPsec (RFC 2410)
 - The ESP CBC-Mode Cipher Algorithms (RFC 2451)
 - The AES-XCBC-MAC-96 Algorithm and Its Use With IPsec (RFC 3566)
 - The AES-CBC Cipher Algorithm and Its Use with IPsec (RFC 3602)

NOTE: IKE would be worked on after above IPsec specifications.



Phase 2 - Coverage (Cont.)

- Transition
 - Stateless IP/ICMP Translation Algorithm (SIIT) (RFC 2765)
 - Network Address Translation - Protocol Translation (NAT-PT) (RFC 2766)
 - Connection of IPv6 Domains via IPv4 Clouds (6to4) (RFC 3056)

To get Migration logo, one of them are enough.
- Management(NICI)
 - Management Information Base for IP Version 6 (RFC 2465)
 - ICMPv6 MIBs (RFC 2466)



IPv6 產業發展新趨勢



新聞簡

“IPv6 Ready 標章可正式核發了!”

“IPv6 論壇 IPv6 Ready 測試認證標章委員會已正式核定並公告 IPv6 Ready 測試認證標章申請程序與相關辦法”

“歡迎立即來為您的產品申請專屬的 IPv6 Ready 標章!”

(台灣 IPv6 Ready 測試認證標章服務單位：NICI IPv6 標準測試實驗室

<http://intern.ipv6.org.tw>)

倫敦/東京/新罕不夏爾, 2003/9/1

IPv6 論壇(IPv6 Forum)召集全世界的互連測試(intersperability)專家共同組成認證標章委員會(IPv6 Ready Logo Committee), 專門負責設計頂尖的互連測試進一步協助大規模發展、建置與推廣第六代網際網路通信協定 IPv6。

IPv6 Ready 測試認證標章委員會已完成 IPv6 符合性(Conformance)和互連測試的規格制定。以這些規格為基礎, IPv6 Ready 測試認證標章委員會將推行 IPv6 Ready 測試認證標章計畫(IPv6 Ready Logo Program)第一階段(Phase I)自 2003 年 9 月 1 日起正式運作。請詳閱其網址 <http://www.ipv6ready.org>。



□ IPv6 產品正式邁入測試認證階段, 積極引導產業界 IPv6 產品之研發。



2003年8月12日我國NICI
標準測試實驗室啟用典



NICI IPv6 SITL



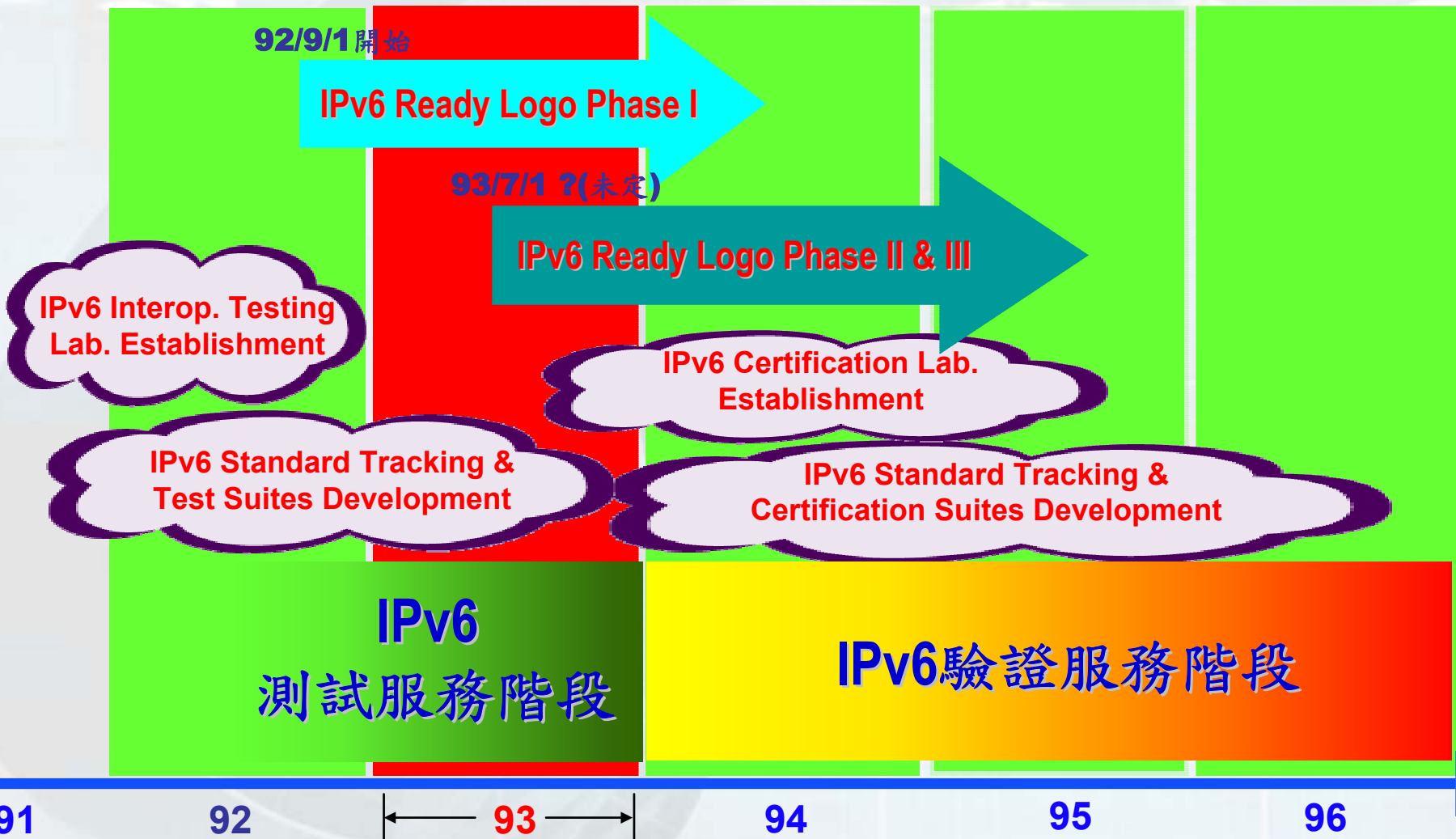
 IPv6 應用服務測試區



 IPv6 標準測試平台



IPv6 Testing & Certification Roadmap



IPv6 Ready Logo Approved List (2003)

Product ID	Vendor Name	Product Name	Country
0111	iBIT	Forsix-1000R	KR
0112	Samsung	Host (Protocol Stack)/SISOv6 Stack	IN
0113	6WND	6WNDgate 6211	FR
0114	KAME	KAME TCP/IP Protocol Stack (acting as a host)	JP
0115	KAME	KAME TCP/IP Protocol Stack (acting as a router)	JP
0116	NEC Corporation	IX1000/IX2000 Series (Typified by IX2010)	JP
0117	NEC Corporation	MobileIPv6 Home Agent	JP
0118	NEC Corporation	MX6350-PG-M	JP
0119	NEC Corporation	IP45/025AT Series	JP
0120	Panasonic	KX-HCM180v6	JP
0121	SAMSUNG Electronics	SAMSUNG IPv6 Stack	KR
0122	CHT Labs.	6SG	TW
0123	Hitachi	GS4000	JP
0124	Hitachi	GR4000	JP
0125	NEC Corporation	IX5000 series	JP
0126	Hitachi	GR2000 B Model	JP
0127	NEC Corporation	NW-IS102B	JP
0128	III	III TTF TCPIP Protocol Stack (for Host)	TW
0129	III	III TTF TCPIP Protocol Stack (for Router)	TW
0130	Intel	Intel IXDP425 Development Platform	TW
0131	Furukawa Electirc	FITELnet-G20	JP
0132	Hitachi	GR2000 S/H Model	JP
0133	Fujitsu Limited	GeoStream R980/R920	JP
0134	Elmic Systems,	KASAGO IPv6	JP
0135	Elmic Systems,	Turbo Treck TCP/IP dual stack	US
0136	Alpha Networks	HomeGateway	TW

200
共

日本
美國
韓國
台灣
法國
印度



The Latest Approved Application List, 2004/1/1 ~ 2004/03/23

Logo ID	Vendor Name	Country	Product Name
I-000137	ETRI	KR	ETRI NGAR
I-000138	Samsung Electronics Co. Ltd.	KR	Samsung_IPV6CH
I-000139	DrayTek	TW	Vigor3300
I-000140	Hexago	CA	Migration Broker
I-000141	Fujitsu Devices Inc.	JP	eTCP/IPv6
I-000142	CEC	JP	ND-EW04
I-000143	Procket Networks	US	PRO/1(TM) Lab
I-000144	Ericsson-Telebit	DK	Dual TIP Stack
I-000145	Hewlett-Packard	US	HP-UX 11i W/ Transport Optional Upgrade Release (TOUR)
I-000146	Hewlett-Packard	US	Tru64 UNIX OS
I-000147	Hewlett-Packard	US	TCP/IP Services for OpenVMS
I-000148	USAGI/WIDE Project	JP	USAGI TCP/IP Protocol Stack (Router)
I-000149	USAGI/WIDE Project	JP	USAGI TCP/IP Protocol Stack (Host)
I-000150	Internet Initiative Japan Inc.	JP	SEIL/neu 2FE Plus
I-000151	iBIT Technologies inc.	KR	iBIT TCP/IPv6 Protocol Stack (acting as a host)
I-000152	Panasonic	JP	KX-HCM230v6
I-000153	Panasonic	JP	KX-HCM130v6
I-000154	Panasonic	JP	KX-HCM280v6

'04/3/
共 44

日本
台灣
美國
韓國
法國
印度
加拿大
丹麥



The Latest Approved Application List, 2004/1/1 ~ 2004/03/23

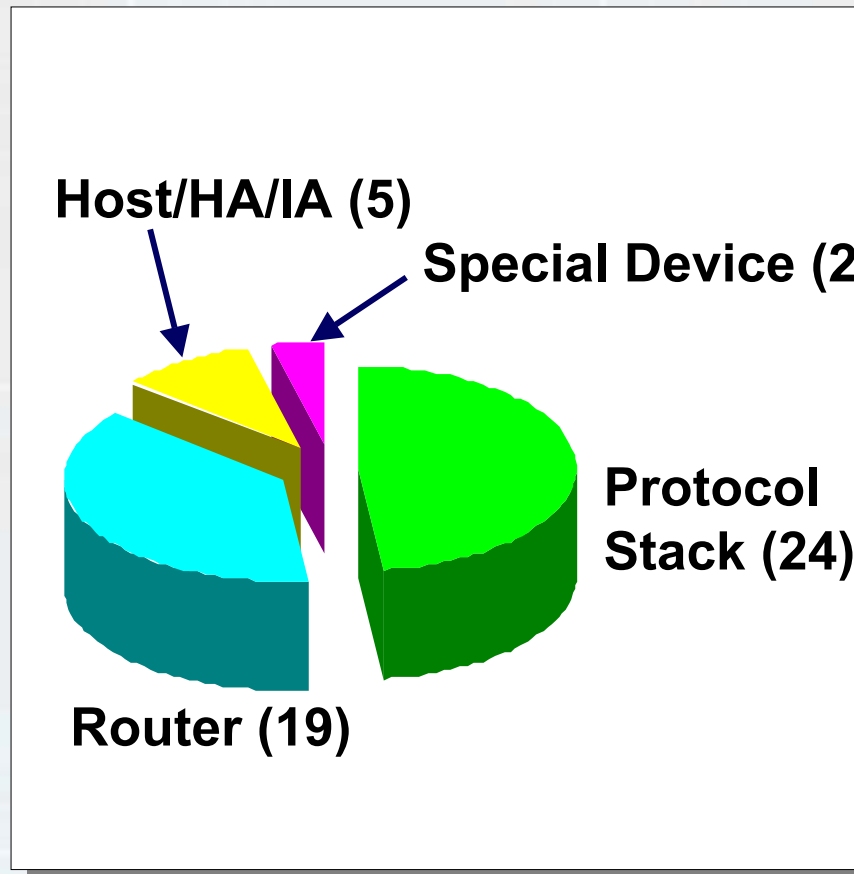
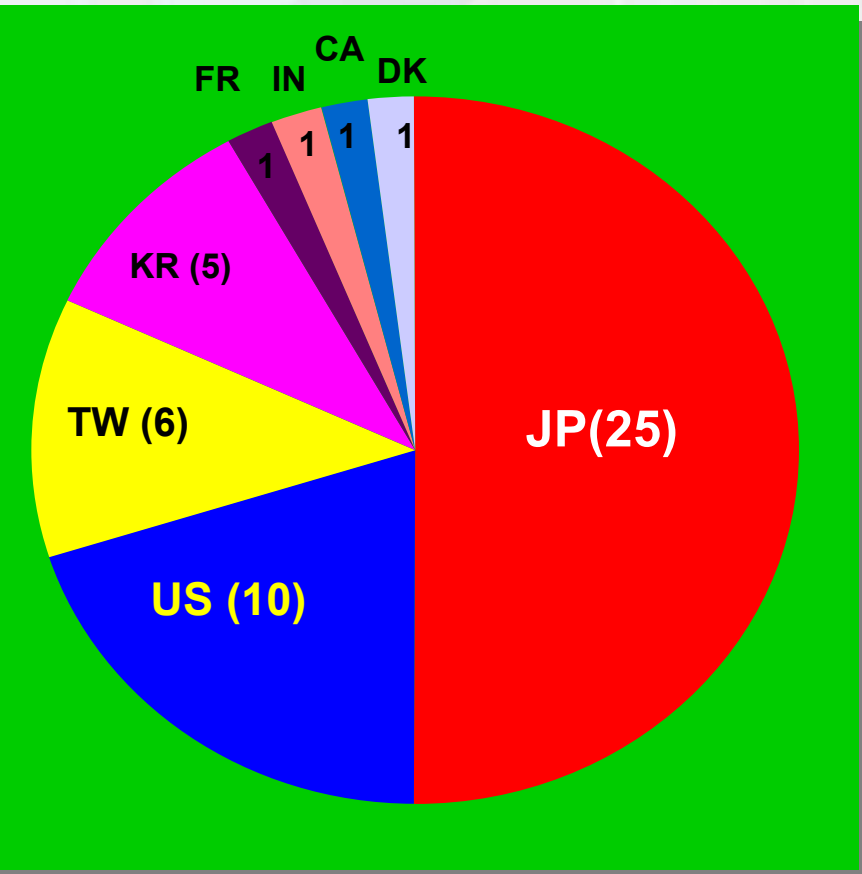
Logo ID	Vendor Name	Country	Product Name
-000155	Panasonic	JP	IPv6 Stack for consumer electronics
-000156	IBM (z/OS; V1R5)	US	Highly secure scalable high-performance enterprise operating system
-000157	Microsoft		
-000158	Microsoft	US	Windows Server 2003 OS with host and router capabilities
-000159	Cisco	US	Cisco 12000 series (Hardware based routers) Cisco IOS 12.0(26)S
-000160	Cisco	US	Catalyst6500/Cisco 7600 series (Hardware based routers) Cisco IOS 12.2(17a)SX1
-000161	Cisco	US	Cisco 7300/7200/7500 series Cisco IOS 12.2(14)S

'04/3/
共 50

日本
台灣
美國
韓國
法國
印度
加拿大
丹麥



國際IPv6 Ready Logo Approved Lis



Logo 核發件數統計(Total:50)

2004/03/30 updated



測試作業與申請程序

出申請
或
了解
試事宜

NICI IPv6標準測試實驗室聯絡窗口
<http://interop.ipv6.org.tw>
atsao@cht.com.tw 03-4245669

NICI IPv6 Lab參觀與測試準備工作討論
(廠商若有需求可前往貴公司簡報)

~~License Agreement
2004/03/24取消~~

輔導建立測試工具

NICI IPv6 Lab測試示範
與技術諮詢

NICI IPv6 Lab協助
審閱申請資料完整性
業者提出正式申請

Self-test Testing

得核發之Logo ID

Interop Testing
NICI IPv6 Lab測試示範
與技術諮詢

Yes

Pass ?

No



2004 IPv6測試技術研討會

USAGI測試實驗說明



IPv6

IPv6 Steering Committee
Standard & Testing Division

NICI IPv6標準測試分組



測試標的

- RedHat9.0+usagi-linux24-stable-20040104
- RedHat9.0+usagi-linux24-s20040315
- RedHat9.0+usagi-linux26-s20040119(*)
- RedHat9.0+usagi-linux26-s20040315
- 工具程式(TAHI Test Suite)
 - Platform: v6eval 2.2b6
 - Scripts: Self_Test_P1_1-2-1



Linux2.4

版本	項目	結果
usagi- linux24- stable- 20040104	SPEC	ALL PASS
	ICMPv6	ALL PASS
	ND	One WARNING(ITEM 8)
	Statless-AutoConfiguration	ALL PASS
usagi- linux24- snapshot- 20040315	SPEC	ALL PASS
	ICMPv6	ALL PASS
	ND	One WARNING(ITEM 8)
	Statless-AutoConfiguration	ALL PASS



ITEM 8

- Receiving valid NSs
 - unicast NS w/ SLLA (link => link)
 - unicast NS w/ SLLA (link => global)
 - unicast NS w/ SLLA (global => link)
 - unicast NS w/ SLLA (global => global)
 - multicast NS w/ SLLA (link => solnode[link])
 - multicast NS w/ SLLA (link => solnode[global])
 - multicast NS w/ SLLA (global => solnode[link])
 - multicast NS w/ SLLA (global => solnode[global])
 - unicast NS w/o SLLA (link => link)



Linux2.6

版本	項目	結果
usagi- linux26- snapshot- 20040119	SPEC	2 FAIL (ITEM 46 47)
	ICMPv6	ALL PASS
	ND	Not Fully Tested ITEM 8 is PASS
	Stateless-AutoConfiguration	Not Tested Yet
usagi- linux26- snapshot- 20040315	SPEC	2 FAIL (ITEM 46 47)
	ICMPv6	ALL PASS
	ND	Not Fully Tested ITEM 8 is PASS
	Stateless-AutoConfiguration	Not Tested Yet



USAGI && v6 Ready Logo

- USAGI 20040119 snaphost for linux 2.6 (37,952,583 bytes)
- Host Role [Logo ID: 01-000149]
- Router Role [Logo ID: 01-000148]
- <http://www.linux-ipv6.org/v6ready/>



Please visit

- <http://interop.ipv6.org.tw/>
- <http://www.ipv6ready.org/>
- <http://www.ipv6forum.com/>



隨時歡迎您與我們聯繫！



NICI IPv6 標準測試實驗室

NICI IPv6 Standard and Interoperability Testing Lab.